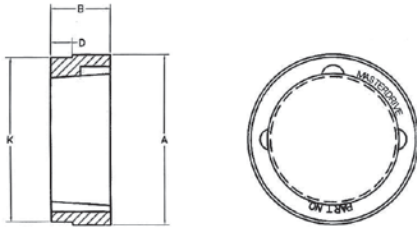


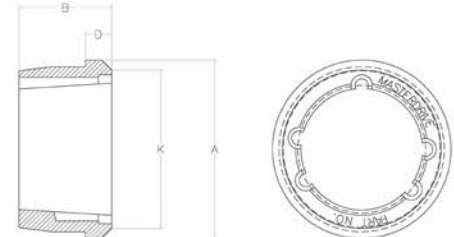
## Weld-On Hubs



S Style TB Bushing Weld-On Hubs

| S Style Weld-On Hub Dimensions |         |       |       |       |       | Thread Dia. |
|--------------------------------|---------|-------|-------|-------|-------|-------------|
| HUBS                           | Bushing | A     | B     | D     | K     |             |
| S16-4                          | 1610    | 3.000 | 1.000 | 0.275 | 2.875 | 3/8-16      |
| S16-6                          | 1610    | 3.000 | 1.000 | 0.450 | 2.875 | 3/8-16      |
| S20-6                          | 2012    | 3.563 | 1.250 | 0.450 | 3.438 | 7/16-14     |
| S20-8                          | 2012    | 3.563 | 1.250 | 0.570 | 3.438 | 7/16-14     |
| S25-6                          | 2517    | 4.250 | 1.750 | 0.450 | 4.125 | 1/2-13      |
| S25-8                          | 2517    | 4.250 | 1.750 | 0.565 | 4.125 | 1/2-13      |
| S25-10                         | 2517    | 4.250 | 1.750 | 0.685 | 4.125 | 1/2-13      |
| S25-16                         | 2517    | 4.250 | 1.750 | 1.090 | 4.125 | 1/2-13      |
| S30-10                         | 3020    | 5.250 | 2.000 | 0.675 | 5.125 | 5/8-11      |
| S30-16                         | 3020    | 5.250 | 2.000 | 1.090 | 5.125 | 5/8-11      |
| S35                            | 3535    | 6.500 | 3.500 | 1.160 | 6.375 | 1/2-13      |

### TB BUSHING WELD-ON HUBS

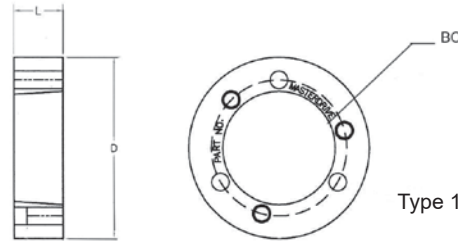


W Style TB Bushing Weld-On Hubs

| W Style Weld-On Hub Dimensions |         |       |       |       |       | Thread Dia. |
|--------------------------------|---------|-------|-------|-------|-------|-------------|
| HUBS                           | Bushing | A     | B     | D     | K     |             |
| W12                            | 1215    | 2.875 | 1.500 | 0.625 | 2.500 | 3/8-16      |
| W16                            | 1615    | 3.250 | 1.500 | 0.625 | 2.875 | 3/8-16      |
| W25                            | 2517    | 4.875 | 1.750 | 0.750 | 4.375 | 1/2-13      |
| WA30                           | 3030    | 5.500 | 3.000 | 0.750 | 5.125 | 5/8-11      |
| WA35                           | 3535    | 6.750 | 3.500 | 1.000 | 6.250 | 1/2-13      |
| WA40                           | 4040    | 7.750 | 4.000 | 1.000 | 7.250 | 5/8-11      |
| WA45                           | 4545    | 8.750 | 4.500 | 1.000 | 8.000 | 3/4-10      |
| WA50                           | 5050    | 9.500 | 5.000 | 1.000 | 8.750 | 7/8-9       |

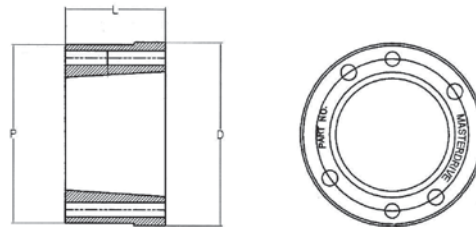
### QD BUSHING WELD-ON HUBS

| QD Weld-On Hub Dimensions |       |       |       |      | Thread Dia. |
|---------------------------|-------|-------|-------|------|-------------|
| HUBS                      | D     | L     | BC    | Type |             |
| JA-A                      | 2.250 | 0.563 | 1.656 | 1    | 10-24       |
| SH-A                      | 3.000 | 0.813 | 2.250 | 1    | 1/4-20      |
| SDS-A                     | 3.500 | 0.750 | 2.688 | 1    | 1/4-20      |
| SK-A                      | 4.375 | 1.250 | 3.313 | 1    | 5/16-18     |
| SF-A                      | 5.000 | 1.250 | 3.875 | 1    | 3/8-16      |
| E-A                       | 6.250 | 1.625 | 5.000 | 1    | 1/2-13      |
| F-A                       | 7.000 | 2.500 | 5.625 | 1    | 9/16-12     |
| J-A                       | 7.750 | 3.188 | 6.250 | 1    | 5/8-11      |



Type 1

| QD Weld-On Hub Dimensions |       |       |        |      | Thread Dia. |
|---------------------------|-------|-------|--------|------|-------------|
| HUBS                      | D     | L     | P      | Type |             |
| M-A                       | 9.50  | 5.188 | 9.250  | 2    | 3/4-10      |
| N-A                       | 10.50 | 6.250 | 10.250 | 2    | 7/8-9       |

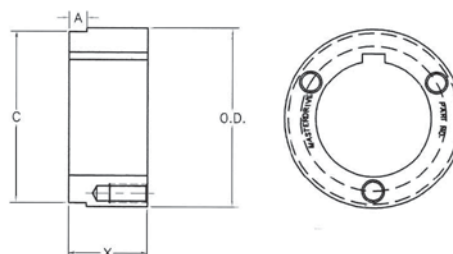


Type 2

Can only be mounted from one direction.

| DST Style Weld-On Hub Dimensions |      |       |       |       | Thread Dia. |
|----------------------------------|------|-------|-------|-------|-------------|
| HUBS                             | O.D  | A     | C     | X     |             |
| HG1                              | 2.00 | 0.174 | 1.875 | 0.625 | 1/4-20      |
| HH1                              | 2.50 | 0.174 | 2.375 | 0.875 | 1/4-20      |
| HCH1                             | 2.50 | 0.625 | 2.375 | 0.875 | 1/4-20      |
| HP1                              | 3.00 | 0.292 | 2.875 | 1.313 | 5/16-18     |
| HCP1                             | 3.00 | 1.000 | 2.875 | 1.313 | 5/16-18     |
| HP2                              | 3.00 | 1.100 | 2.875 | 2.313 | 5/16-18     |
| HQ1                              | 4.50 | 0.709 | 4.375 | 1.750 | 3/8-16      |
| HCQ1                             | 4.50 | 1.250 | 4.375 | 1.750 | 3/8-16      |
| HQ2                              | 4.50 | 1.606 | 4.375 | 2.750 | 3/8-16      |
| HR1                              | 5.75 | 0.709 | 5.625 | 2.000 | 3/8-16      |
| HR2                              | 5.75 | 1.606 | 5.625 | 4.000 | 3/8-16      |

### DST BUSHING WELD-ON HUBS



All sizes made out of **Low Carbon Steel**.