



Element Materials Technology
 3200 S 166th Street
 New Berlin, WI
 53151-4141 USA

P 262 782 6344
 F 262 782 3653
 T 800 726 6385
 info.newberlin@element.com
 element.com

Terry Schroeder
 Masterdrive, Inc.
 701 Highland Ave.
 P.O. Box 157
 Fort Atkinson, WI 53538

TEST CERTIFICATE – EAR-CONTROLLED DATA

Date: August 13, 2018
 P.O. No.: 017410
 Report No.: MAS045-18-08-59483-1

Subject: Layer Thickness of Phosphate Coating on Three Bushings

Phosphate Coating Thickness Results
 (mils)

Measurement	G-1	SF1	SF2
1	0.78	0.63	0.63
2	0.61	0.73	0.60
3	0.61	0.84	0.99
4	0.47	0.71	0.81
5	0.46	0.70	0.52
Average	0.59	0.72	0.71

Tested in accordance with ASTM B487.

EAR Controlled Data: This document contains technical data whose export and re-export/retransfer is subject to control by the U.S. Department of Commerce under the Export Administration Act and the Export Administration Regulations. The Department of Commerce's prior written approval is required for the export or re-export/retransfer of such technical data to any foreign person, foreign entity or foreign organization whether in the United States or abroad. These commodities, technology or software were exported from the United States in accordance with the Export Administration Regulations. Diversion contrary to U.S. law is prohibited.

It is our policy to retain components and sample remnants for a minimum of 30 days from the report date, after which time they may be discarded. This project shall be governed exclusively by the General Terms and Conditions of Sale and Performance of Testing Services by Element Materials Technology New Berlin Inc. a Wisconsin business corporation d.d. December 2, 2011. The data herein represents only the item(s) tested. In no event shall Element be liable for any consequential, special or indirect loss or any damages above the cost of the work. This report shall not be reproduced, except in full, without prior permission of Element.

Electronic Original

Signed:

John Mantas
 Metallurgical Engineering Specialist

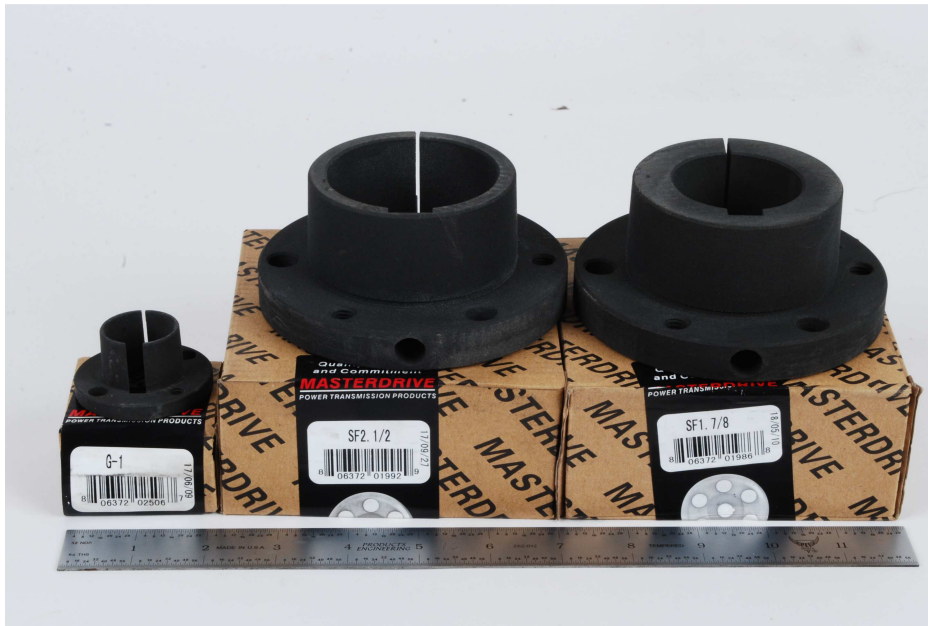


Fig. 1 From left to right, Samples G-1, SF2, and SF1 are presented atop their respective boxes. The scale is in inches.

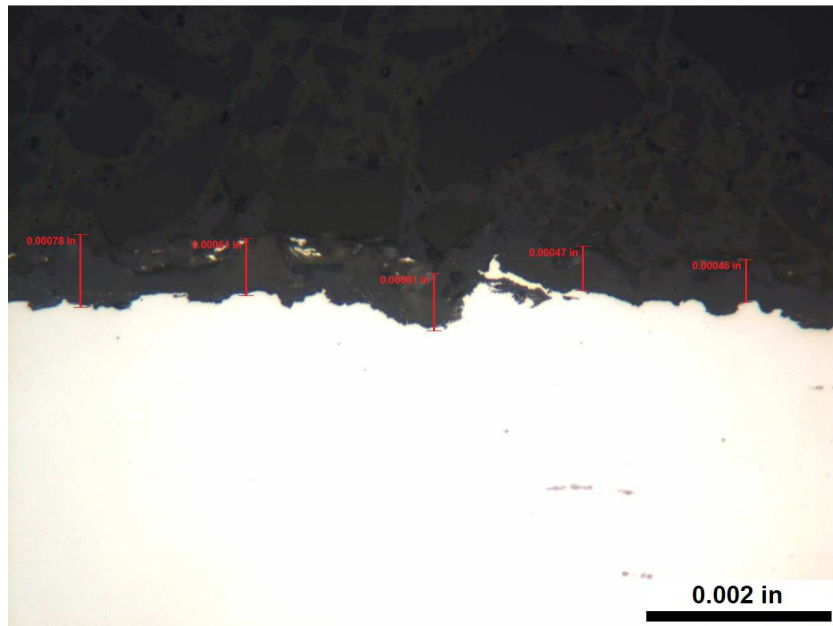


Fig. 2 A typical cross-section of Sample G-1 is presented. Individual measurements of the phosphate coating are annotated in red. As polished.

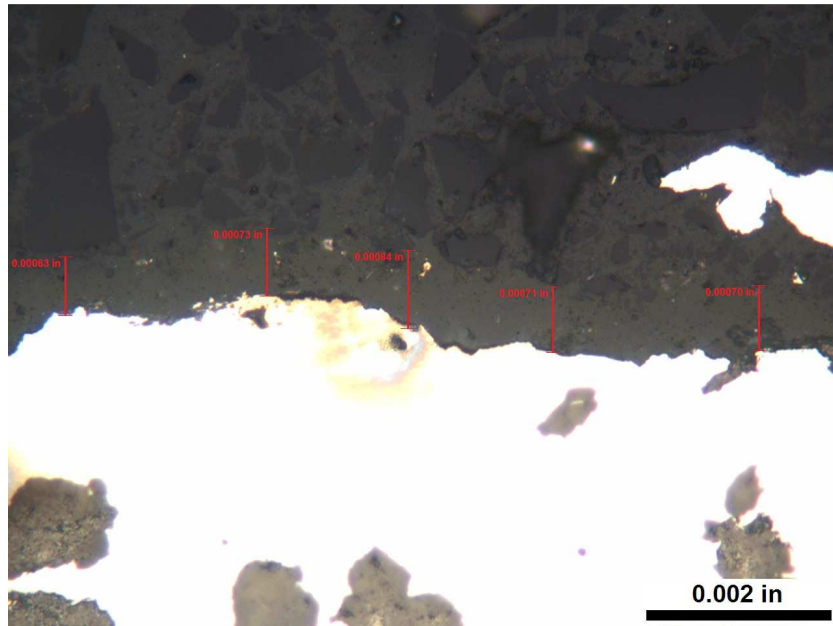


Fig. 3 A typical cross-section of Sample SF1 is presented. Individual measurements of the phosphate coating are annotated in red. As polished.

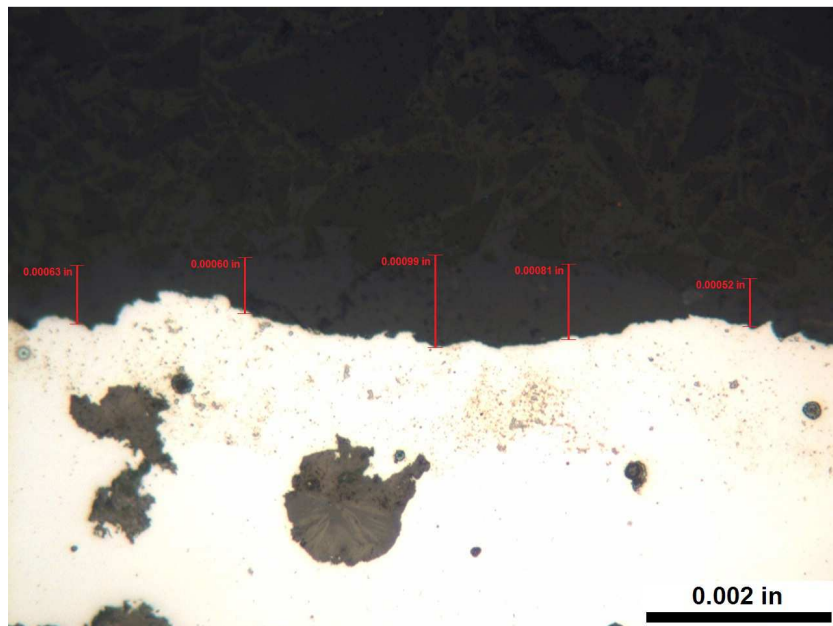


Fig. 4 A typical cross-section of Sample SF2 is presented. Individual measurements of the phosphate coating are annotated in red. As polished.